

**PAYDAR LINEAR (CEILING & WALL)
12PL201005**

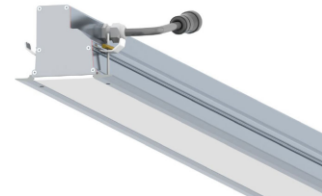
AREND

LED_Linear family	IP44	IK05			T _a 25						
-------------------	------	------	--	--	-------------------	--	--	--	--	--	--

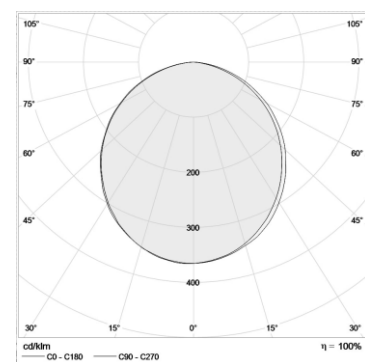
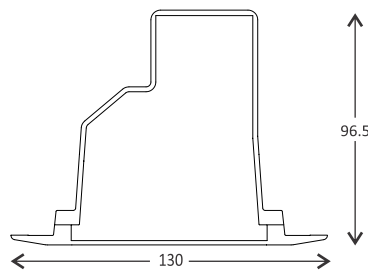
THE FAMILY OF RECESSED MOUNT (CEILING & WALL) BACK LIGHT LED LINEAR OPERATING AT 36W 220-240 VAC INPUT. DELIVERING OUT STANDING PERFORMANCE OF 3600LM.

Technical description

Recessed, linear system for indoor general lighting. The recessed lumenline is a linear system of LED luminaires which can be integrated in most ceiling types to provide a discreet flexible general lighting solution for commercial and institutional environments such as offices and class rooms. Color temperature is 4000 kelvin (natural white). A recessed LED Luminaries, flat direct LED with the top of the optical polystyrene diffuser (PC or PMMA an option) screen and extruded powder coating hard anodizing aluminum body, with aluminum end caps complete with silicone seals. Symmetric optic. Class I electrical and IP44 (IP54 just for option) with plug and play connector. Total power: 30 w/m, slave luminaire for DALI control (an option only) with LED converter. Chromaticity tolerance (initial MacAdam: 3). Color rendering Ra>80.



Dimensions: 1200 x 130 x 96.5 mm
 Total power: 36 w
 Luminaire luminous flux: 3600 lm
 Luminaire efficacy: 100 lm/w
 Weight: 3 kg



Application

- Corridors
- Office
- General
- Parking

Correlated color temperature: 4000 kelvin
 Rated median useful life: 50000h L70 at 25°C
 Luminaire input power: 36 w

Mounting and installation

Ceiling and wall recessed using the outer casing to be ordered separately. Push-lock connectors are simply installed and connect with no need to compromise IP44 sealed design. Cut-out diameters: 100 mm

Options:

