

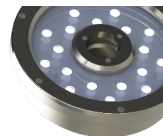
12PS302001

LED_Spot & Under Water Family	IP68	IK08	LED	LED	T _a 25	5			
-------------------------------	------	------	-----	-----	-------------------	---	--	--	--

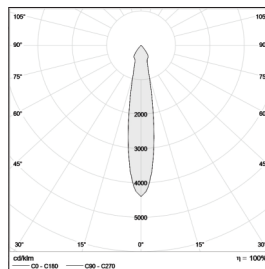
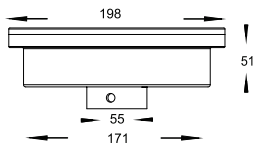
FAMILY OF POOL SPOT, FLOOD LIGHT LED OPERATING AT 30W, 24 VDC INPUT DELIVERING OUTSTANDING PERFORMANCE OF 990LM.

Technical description

The free standing underwater LED lights can be used with a variety of fountain nozzle to give spectacular colors to water with its white or RGB color changing technology. Ideal for sequenced fountain as the DMX controllability provides additional control for choreographed sequencing effects and virtual effects with water. Available in white LED as on/off control for non-sequencing fountains. Optional rock guard is available on request. steel 361 body material.



Dimensions: Ø 198 x 51 mm
 Total power: 30 w
 Luminaire luminous flux: 990 lm
 Luminaire efficacy: 33
 Weight: 2.8 kg



Application

- Pool spot
- Flood light

Correlated color temperature: RGB
 Rated median useful life: 5000h L70 at 25°C
 Luminaire input power: 30W

Mounting and installation

Free standing or fixed by bolt. Also can order adjustable height pool.

Options:

