

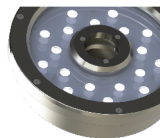
12PS302004

LED_Spot & Under Water Family	IP68	IK08	LED	DMX	T _a 25	30W	3000K	2100lm	70lm/W	5000h
-------------------------------	------	------	-----	-----	-------------------	-----	-------	--------	--------	-------

FAMILY OF POOL SPOT, FLOOD LIGHT LED OPERATING AT 30W, 24 VDC INPUT DELIVERING OUTSTANDING PERFORMANCE OF 2100LM.

Technical description

The free standing underwater LED lights can be used with a variety of fountain nozzle to give spectacular colors to water with its white or RGB color changing technology. Ideal for sequenced fountain as the DMX controllability provides additional control for choreographed sequencing effects and virtual effects with water. Available in white LED as on/off control for non-sequencing fountains. Optional rock guard is available on request. steel 361 body material.



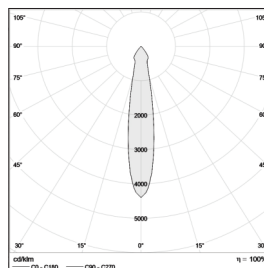
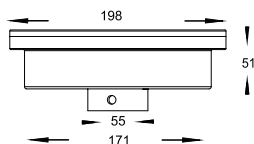
Dimensions: Ø 198 x 51 mm

Total power: 30 w

Luminaire luminous flux: 2100 lm

Luminaire efficacy: 70

Weight: 2.8 kg



Application

- Pool spot
- Flood light

Correlated color temperature: 6000 kelvin
 Rated median useful life: 5000h L70 at 25°C
 Luminaire input power: 30W

Mounting and installation

Free standing or fixed by bolt. Also can order adjustable height pool.

Options:

