

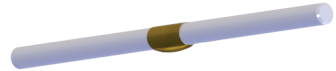
LED_Decorative family	-	-	LED	T _a 25	5	10	15	20	25	30	35	40	45	50	55	60	65	70	75	80	85	90	95	100
-----------------------	---	---	-----	-------------------	---	----	----	----	----	----	----	----	----	----	----	----	----	----	----	----	----	----	----	-----

THE FAMILY OF ARCHITECTURAL LED WALL LIGHTS OPERATING AT 18W 220AC INPUT DELIVERING OUTSTANDING PERFORMANCE OF 1080LM.

Technical description

Luminaire was designed to be use as a decorative wall light to illumination area where luxury atmosphere. Body material is the raw brass without any extra coating opaque. PMMA optic lens with very uniform and anti-glaring distribution. The sleek and classic design of this wall light is complemented by its advanced functionality. In addition, you can change the color temperature of the light from a calming warm white to an invigorating day light/neutral tone. The lamp contains no tungsten, mercury, or other toxic materials or fragile glass parts.

Its unique design makes for a great conversation piece while enhancing any kind of traditional, urban, contemporary, or minimalist decor. Available in oxidized gold, nickel or copper with a high glass, matte or brushed finished.



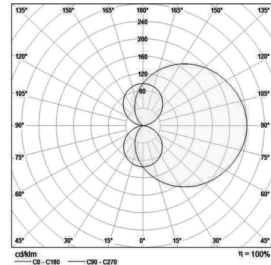
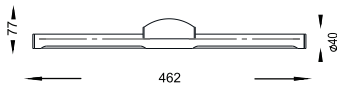
Dimensions: Ø40 x 462 mm

Total power: 18 w

Luminaire luminous flux: 1080 lm

Luminaire efficacy: 60 lm/w

Weight: 2.8 kg



Application

- Hotel
- Home
- Office

Correlated color temperature: 4000 kelvin
Rated median useful life: 50000h L70 at 25°C
Luminaire input power: 18 W

Mounting and installation

For wall-mounting with the special base U shape bracket can be installed with the light beam in any direction(up,down,left,right)

Options:

