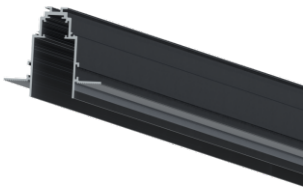


LED_Low voltage family	-	-	-	-	-			-		
------------------------	---	---	---	---	---	---	---	---	---	--

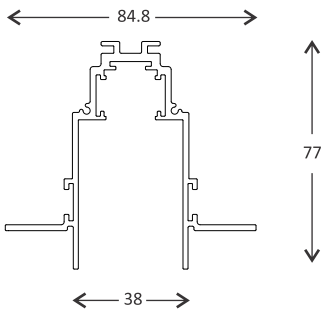
THE FAMILY OF LOW VOLTAGE RECESSED MAGNETIC TRIMLESS TRACK 48VDC INPUT.

Technical description

48V low voltage magnetic track for recessed applications with no contact frame (trimless). Designed to house lighting elements fitted with a 48V adaptor. Made of anodized extruded aluminum, and body color is black. It includes a series of assembly plates designed to allow profiles to be installed in false ceilings with 12.5 mm thicknesses. The integrated circuit, designed to interact with the DC/DC driver included in the adapters (drivers to be ordered separately). Metal bus bar to set spot and linear magnet linear. To obtain continuous lines, direct and corner joints are available with separate codes. 4 kg (max) load every 1000 mm, with maximum distance of 200 mm between fixing points. ( DALI dimming just for options).



Dimensions: 4000 x 84.8 x 77 mm  
Max voltage: 48 V, 10 A  
Max wattage: 200 W  
Weight: 7.2 kg



Application

- Decorative
- Art gallery
- Hotel
- Office
- House

Correlated color body: Black

Mounting and installation

Ceiling or wall-recessed. Direct and corner joints are available. Free standing recessed and fix with screw.

Options: 24V 