

Spot Panel LED Module

Product description

- Ideal for Spot Panel
- Long lifetime: 60,000 hours
- Color temperature 3000 – 4000 – 6000 k
- luminous flux 120 lm/w
- LED Size 30 x 30 mm
- Quantity of LED 12 pieces
- OSRAM GW PSLT33.PM
- Based on Aluminum



LED Technical Data

Parameter	Symbol	Symbol	Values
Operating Temperature	T_{op}	min.	-40 °C
		Max.	100 °C
Junction Temperature	T_j	max.	125 °C
Forward Current TJ = 25 °C	I_f	min.	10mA
		Max.	200mA
Forward Voltage $I_f = 60mA$	VF	min.	5.80v
		Typ.	6.13v
		Max.	6.60v
Color Rendering Index	CRI	min.	70
		Typ.	72

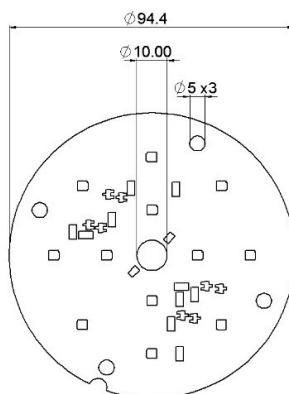
Module Technical Data

Voltage	48V
Irated	250mA
Imax	350mA
Minimum Power	12w
Maximum Power	16w
Beam characteristic	120°
Type of protection	IP00
Lumen maintenance	60,000 h

Component List

Name	Value	Quantity
LED	3030OSRAM	12X
	GW PSLT33.PM	
Transistor	MMBT5551	8X
Resistor	10k	4X
Resistor	11 Ohm	4X
Resistor	00hm	2X

Mechanical Description



- Module dimension $\Phi 94.4 \times 1$ mm
- Simple installation using by screws